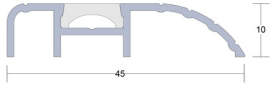


Fitting instructions

Threshold plate

LAS4015



Length:.....

Contents include

Aluminium threshold
Aluminium snap cover
Stainless Steel screws and
plugs
Fitting instruction

Tools required

Tape measure
Pencil or marker
Saw (power or hand)
Power drill
4.5mm drill bit
6.0mm masonry bit

For further information about our
products please visit our website

www.lorientgroup.com

t: +61 (02) 9905 0868
f: +61 (02) 9905 0883
e: admin@lorientau.com.au

Instructions

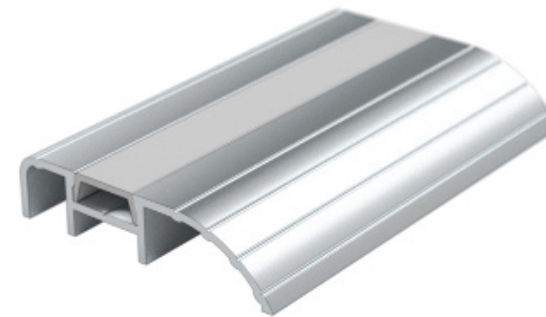
It is not necessary to remove the door from its hinges.

1. Remove the plate from the packaging and measure the door width, between jambs or door stops to determine the plate length required.
2. Measure the threshold and mark with a pencil the desired length (and profile if cutting around the door stop).
3. Cut through the threshold plate and cover using a saw.
4. Position the plate on the door sill in required location.
5. Using a power drill with a 4.5mm drill bit, create fixing holes in plate at the required positions.

Please note: Recommendations as to methods, use of materials and construction details are based on the experience and knowledge of Lorient and are given in good faith as a general guide and service to designers, contractors and manufacturers.

Lorient reserves the right to make alterations or delete installation detail without prior notice.

6. With the plate in position, mark hole centres on the floor. Using a masonry drill, create fixing holes. Clean away dust and insert supplied plastic plugs.
7. Screw fix, then fit the snap on cover to hide screw heads.
8. Where the threshold plate meets the door stop, sealant may be applied to prevent ingress of moisture.
9. Check to ensure the door can open and close properly.



Please note: For effective operation, the LAS4015 threshold plate requires a minimum of 12mm clearance between the door and the floor.

Important

Ensure that the installation of this product does not impede the opening or closing of the door.

Other Lorient products:

Acoustic, smoke & fire seals
Fire resistant glazing systems
Fire resistant door hardware
Air transfer grilles/ dampers



Lorient Pty Ltd
Unit 30, 9 Powells Road
Brookvale 2100
New South Wales
Australia

+61 (02) 9905 0868
www.lorientgroup.com

All rights reserved. No part of this fitting guide may be reproduced, stored in a retrieval system, or transmitted in any means, electronic, mechanical, photocopying, recording or otherwise without the written permission of Lorient Polyproducts Limited.
© Lorient Polyproducts Ltd 2018