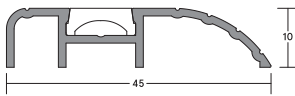


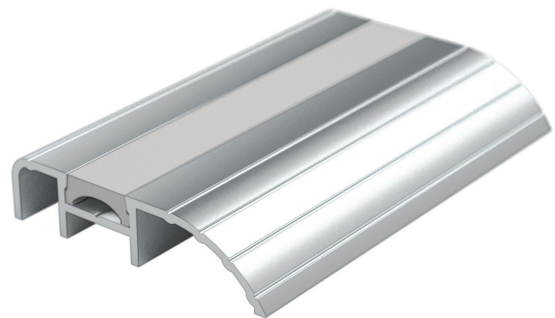
LAS4015

HEAVY DUTY

Heavy duty, aluminium threshold plate suitable for outward opening doors to prevent rain, draught and light. Can increase the effectiveness of threshold seals by creating a firmer gasket contact. Durable anodised aesthetic finish.



LAS4015



SYSTEM SPECIFICATIONS

Key benefits

- ▶ Durable anodised aesthetic finish.

Approvals

- ▶ **Fire:** Tested in accordance with AS1530.4 on proprietary AS1905.1 fire door assemblies for up to 4 hour rating.
- ▶ **Bushfire:** Approved for use on proprietary fire door assemblies for Bushfire attack levels of Flame Zone (FZ) classification or less.

Standard lengths

- ▶ 1m and 2.1m.
- ▶ Other lengths available to special order.

Fixing method

- ▶ Fixing screws are supplied.

Finishes

- ▶ Silver anodised aluminium with grey cover strip.