

## Fitting instructions

Threshold plate

### LAS4014



Length:.....

### Contents include

Aluminium threshold  
Silicone rubber gasket  
Stainless steel screws and plugs  
Fitting instruction

### Tools required

Tape measure  
Pencil or marker  
Saw (power or hand)  
Power drill  
4.5mm drill bit  
6mm masonry bit  
Countersink  
Construction adhesive

For further information about our products please visit our website

[www.lorientgroup.com](http://www.lorientgroup.com)

t: +61 (02) 9905 0868  
f: +61 (02) 9905 0883  
e: [admin@lorientau.com.au](mailto:admin@lorientau.com.au)

## Instructions

It is not necessary to remove the door from its hinges.

1. Remove the plate from the packaging and measure the door width, between jambs or door stops to determine the plate length required.
2. Measure the threshold and mark with a pencil the desired length (and profile if cutting around the door stop).
3. Pull back the silicone gasket and cut the threshold plate to length using a saw. Replace the silicone gasket and trim to length with a knife.
4. Position the plate on the door sill in required location (ensuring the bottom edge of the door is butted up against the rubber bulb seal).

**Please note:** Recommendations as to methods, use of materials and construction details are based on the experience and knowledge of Lorient and are given in good faith as a general guide and service to designers, contractors and manufacturers.

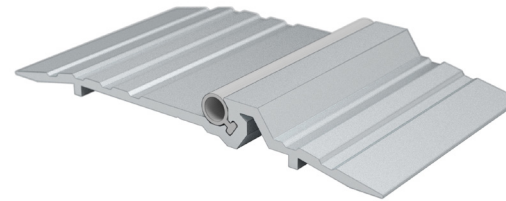
Lorient reserves the right to make alterations or delete installation detail without prior notice.

5. **Screw fix:** Using a power drill with a 4.5mm drill bit, create fixing holes in the plate at the required positions. Countersink to ensure flush screw heads. With the plate in position, mark hole centres on the floor.

Using a masonry drill, create fixing holes. Clean away dust and insert supplied plastic plugs. Screw fix.

**Adhesive fix:** Apply adhesive to the back of the threshold plate and place it in the desired position.

6. Where the threshold ramp meets the door stop, sealant may be applied to prevent ingress of moisture.
7. Check to ensure the door can open and close without the need for excessive force.



**Please note:** For effective operation, the LAS4014 threshold plate requires a minimum of 9mm clearance between the door and the floor.

Ensure that the installation of this product does not impede the opening or closing of the door.

### Important

Ensure that the installation of this product does not impede the opening or closing of the door.

### Other Lorient products:

Acoustic, smoke & fire seals  
Fire resistant glazing systems  
Fire resistant door hardware  
Air transfer grilles/ dampers