

Fitting instructions

Threshold plates



Length:

Contents include

Aluminium threshold
Stainless steel screws and plugs
Vinyl feet
Fitting instruction

Tools required

Tape measure
Pencil or marker
Saw (power or hand)
Power drill
4.5mm drill bit
6mm masonry bit
Countersink
Construction adhesive

For further information about our products please visit our website

www.lorientgroup.com

t: +61 (02) 9905 0868

f: +61 (02) 9905 0883

e: admin@lorientau.com.au

Instructions

1. Remove the plate from the packaging and measure the door width, between jambs or door stops to determine the plate length required.
2. Measure the threshold plate and mark the desired length (and profile if cutting around door stop) with a pencil.
3. Pull back vinyl feet and cut the threshold plate to length using a saw. Replace the vinyl bedding feet and trim to length with knife.
4. Position the plate on the door sill in required location.
5. **Screw Fix**
Using a power drill with a 4.5mm drill bit, create fixing holes in the plate at required positions. Countersink to ensure flush screw heads.

Please note: Recommendations as to methods, use of materials and construction details are based on the experience and knowledge of Lorient and are given in good faith as a general guide and service to designers, contractors and manufacturers.

Lorient reserves the right to make alterations or delete installation detail without prior notice.

6. With threshold plate in position, mark hole centres on floor.

Using masonry drill, create fixing holes. Clean away dust and insert supplied plastic plugs.

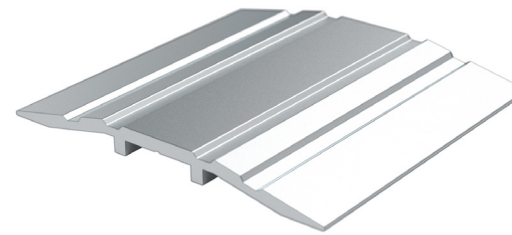
Screw fix the threshold in place using screws and plugs supplied.

Adhesive Fix

Apply adhesive to the back of the threshold plate and place it in the desired position. (Discard the vinyl feet if not suitable).

Note: For exterior applications where threshold plate meets the door stop, sealant should be applied to prevent water ingress.

Check to ensure the door opens and closes freely.



Please note: For effective operation, the LAS4010, LAS4011, LAS4012 and LAS4013 threshold plates require a minimum of 8mm clearance between the door and the floor.

Important

Ensure that the installation of this product does not impede the opening or closing of the door.

Other Lorient products:

Acoustic, smoke & fire seals
Fire resistant glazing systems
Fire resistant door hardware
Air transfer grilles/ dampers