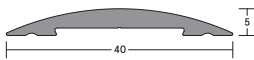


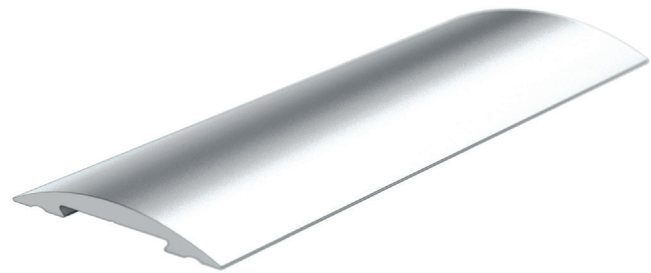
LAS4002

MEDIUM DUTY

Medium duty, gently curved low-profile aluminium threshold plate. Used where the door sill is uneven, this threshold plate creates a level sealing surface that greatly enhances the ability of door bottom seals to restrict the passage sound, smoke, energy or weather.



LAS4002



LAS4002

THRESHOLD PLATES + RAMPS

SYSTEM SPECIFICATIONS

Key benefits

- ▶ Creates a flat sealing surface.
- ▶ Enhances the performance of other sealing systems.
- ▶ Slim-line geometry satisfies AS1428.1 access for people with disability requirements.
- ▶ Durable hard wearing anodised finish.

Gap sizes

- ▶ Minimum 6mm door undercut.

Fixing method

- ▶ Mechanically fixed to threshold with supplied screw pack or adhered with construction adhesive.

Approvals

- ▶ **Fire:** Tested in accordance with AS1530.4 on proprietary AS1905.1 fire door assemblies up to 4 hour rating.
- ▶ **Sound:** Acoustically tested as part of a system in accordance with ISO10140-2 and AS/NZS717.1.
- ▶ **Bushfire:** Approved for use on proprietary fire door assemblies for Bushfire attack levels of Flame Zone (FZ) classification or less.

Standard lengths

- ▶ 1m and 2.1m.
- ▶ Other lengths available to special order.

Finishes

- ▶ Silver anodised aluminium.