

AAS 4552

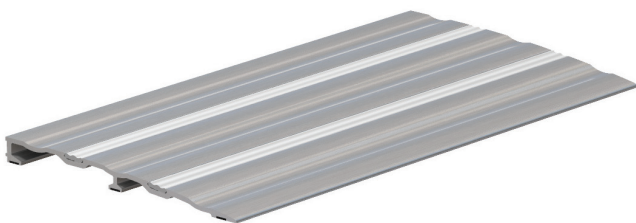
THRESHOLD RAMP

For use in buildings where wheelchairs and trolleys are used, or to compensate for uneven floors. Reversible tread strips provide greater traction. Unique 'scoops' further enhance grip for foot or wheeled traffic.

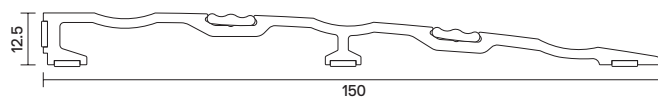
MEDIUM DUTY



AAS4552 ↓



TECHNICAL



AAS4552 ↑

Location

Single and double swing doors.

Seal Material

Aluminium with two flexible tread strips.

Standard Lengths

- 1m and 2.1m.
- Other lengths available for special order.

Fixing

- Pre-drilled & countersunk.
- Fixing screws supplied.
- Tread strips supplied and push-fit into plate to conceal fixings.

Finishes

- Silver anodised aluminium with silver tread strips.
- Decorative finishes for threshold plate and different colour tread strips available on request.

PERFORMANCE

Fire

Approved for use on proprietary AS1905.1 fire doors for up to 4 hours.