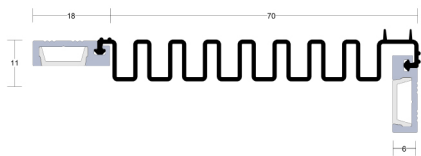


## Fitting Instructions

Fingerguard seal (for hinge side of door)

### LAS 9070



Length:.....

### Contents include

|                        |                      |
|------------------------|----------------------|
| Decorative cover strip | Bag of screws        |
| Aluminium carrier      | Fitting instructions |
| Pre-slotted holes      |                      |
| Flexible gasket        |                      |

### Tools required

Tape Measure  
Saw (Power or Hand)  
Screw Driver  
Drill (Power or Hand)  
2.5mm Drill Bit  
Knife  
Pencil or Marker

For further information about our products please visit our website

[www.lorientgroup.com](http://www.lorientgroup.com)

t: +61 (02) 9905 0868

f: +61 (02) 9905 0883

e: [admin@lorientau.com.au](mailto:admin@lorientau.com.au)

## Instructions

It is not necessary to remove the door from its hinges unless otherwise specified.

1. Remove the seal from the packaging and measure the existing jambs (sides) of the door frame to determine the seal length required.
2. Remove the decorative cover strip from the aluminium carriers.
3. Pull back flexible gasket and cut the aluminium carriers to the lengths required.
4. Cut the decorative cover strips to the lengths required.
5. Slide flexible gasket back into position and cut to required length.
6. With the door closed, (fig 1) position the aluminium carriers to the door stop and side of the door, ensure the frame mounted carrier is positioned just back from the door edge allowing the smoke fins to gently sit against the door. The gasket should sit flat along the door and not be stretched or loose (fig 2).
7. Mark out the slotted hole locations with a pencil. lightly screw-fix each length through the slotted holes with the screws supplied. (Fixing holes are pre-slotted to enable the seal to be accurately adjusted as required).
8. Ensure that the Finger Guard profile extends right to the bottom of the door leaf but does not drag on the floor. Check for correct operation as the door is opened and closed.
9. Tighten the screws and replace the decorative cover strip.

**Please note:** Recommendations as to methods, use of materials and construction details are based on the experience and knowledge of Lorient and are given in good faith as a general guide and service to designers, contractors and manufacturers.

Lorient reserves the right to make alterations or delete installation detail without prior notice.

**Important:** Ensure that the installation of this product does not impede the opening or closing of the door. It is recommended to check the adjustment of the door seal periodically to ensure the door assembly to which it is fitted, closes and latches properly.

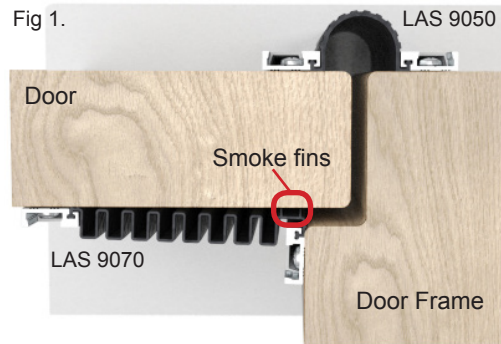
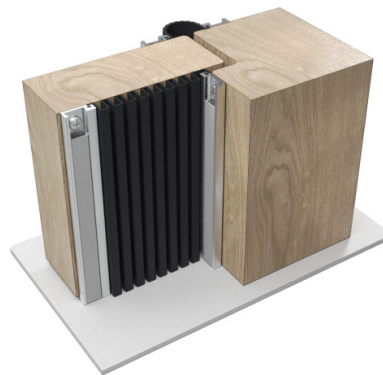


Fig 2.



We recommend LAS 9070 be fitted with LAS 9050 Finger Guard Seal on the hinge side of the door.

**NOTE:** If you require a door bottom seal, only use a product that can be fully mortised. For example, LAS 8001 si.

### Other Lorient products:

Acoustic, smoke & fire seals  
Fire resistant glazing systems  
Fire resistant door hardware  
Air transfer grilles/ dampers