

Fitting Instructions

Hingeguard seal (for hinge side of door)

LAS 9050



Length:.....

Contents include

Decorative cover strip	Bag of screws
Aluminium carrier	Fitting instructions
Pre-slotted holes	
Flexible gasket	

Tools required

Tape measure
Saw (power or hand)
Screw driver
Drill (power or hand)
2.5mm Drill bit
Knife
Pencil or marker

For further information about our products please visit our website

www.lorientgroup.com

t: +61 (02) 9905 0868

f: +61 (02) 9905 0883

e: admin@lorientau.com.au

Instructions

It is not necessary to remove the door from its hinges unless otherwise specified.

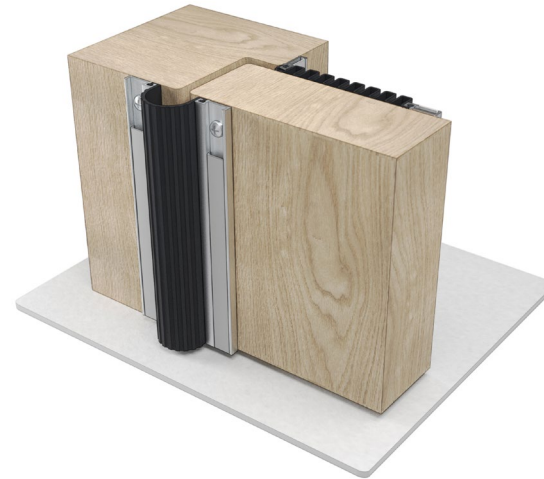
1. Remove the seal from the packaging and measure the existing jambs (sides) of the door frame to determine the seal length required.
2. Remove the decorative cover strip from the aluminium carriers.
3. Pull back flexible gasket and cut the aluminium carriers to the lengths required.
4. Cut the decorative cover strip to the lengths required.
5. Slide flexible gasket back into position and cut to required length.

Please note: Recommendations as to methods, use of materials and construction details are based on the experience and knowledge of Lorient and are given in good faith as a general guide and service to designers, contractors and manufacturers.

Lorient reserves the right to make alterations or delete installation detail without prior notice.

Important: Ensure that the installation of this product does not impede the opening or closing of the door. It is recommended to check the adjustment of the door seal periodically to ensure the door assembly to which it is fitted, closes and latches properly.

6. Position the aluminium carriers to either side of the door hinge and mark out the slotted hole locations with a pencil.
7. Lightly screw-fix each length to the door through the slotted holes with the screws supplied. (Fixing holes are pre-slotted to enable the seal to be accurately adjusted as required).
8. Ensure that the Hingeguard profile covers the gap between the door leaf and frame right to the bottom of the assembly, but does not drag on the floor.
9. Tighten the screws and replace the decorative cover strip.



We recommend LAS 9050 be fitted with a LAS 9070 Fingeguard Seal.

Other Lorient products:

Acoustic, smoke & fire seals
Fire resistant glazing systems
Fire resistant door hardware
Air transfer grilles/ dampers