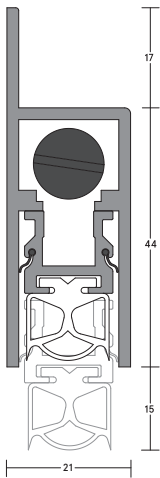


DROP SEALS

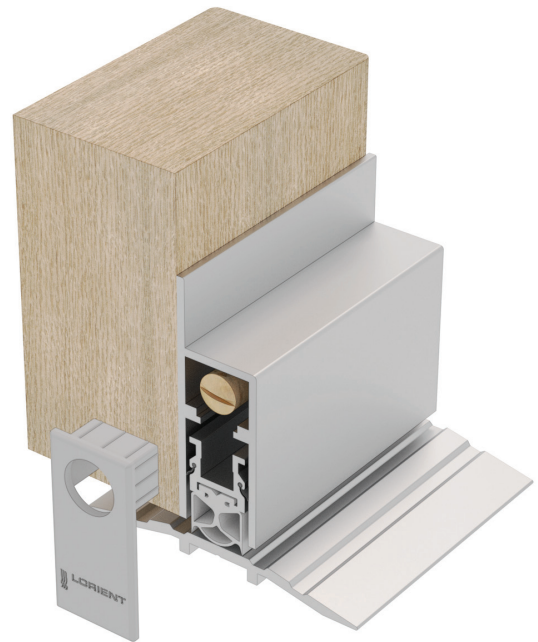
LAS8006 si

HEAVY DUTY

A heavy duty, face-fixed or semi-mortised automatic drop seal. It features a silicone rubber gasket and internal fins. It is used to close the gap under single swing doors to maintain the acoustic, smoke and energy efficiency performance. The seal incorporates a high efficiency spring loaded mechanism that extends the seal as the door swings shut and automatically retracts it as the door is opened by just a few centimetres.



▲ LAS8006 si



DROP SEALS

▲ LAS8006 si
shown with LAS4010

SYSTEM SPECIFICATIONS

Key benefits

- ▶ Effective acoustic sealing solution that can easily be retrofitted to existing door assemblies.
- ▶ Dual internal sealing fins enhance acoustic and smoke containment performance.
- ▶ Quickly and easily fitted to the bottom of door.
- ▶ Can be fitted semi-mortised for a flush finish.
- ▶ Supplied with a fire rated silicone rubber gasket and aesthetic push-fit end caps.
- ▶ Fully automatic, no power connection required.
- ▶ Simple adjustment to suit varying door gap requirements.
- ▶ Proven long term reliability.

Gap sizes

- ▶ Accommodates & seals gaps up to 15mm.
- ▶ Greater gaps can be sealed if product is used with a threshold plate, please speak to our technical team for more info.

Approvals

- ▶ **Fire:** Tested in accordance with AS1530.4 on proprietary AS1905.1 fire door assemblies for up to 4 hour rating.
- ▶ **Smoke:** Tested in accordance with AS1530.7 with medium temperature smoke approvals for use on AS6905 compliant smoke door assemblies. Conforms with BCA Specification C3.4 smoke sealing requirements.
- ▶ **Sound:** Acoustically tested in accordance with ISO10140-2 and AS/NZS717.1 with ratings up to 39Rw on appropriate rated assemblies.
- ▶ **Bushfire:** Approved for use on proprietary fire door assemblies for Bushfire attack levels of Flame Zone (FZ) classification or less.
- ▶ **Durability:** Long term mechanical test, completing 100,000 cycles without failure.

Fixing method

- ▶ Face-fixed or semi-mortised to the bottom of the door. Fixing screws are supplied.

Standard lengths

- ▶ 435mm (may be cut back to 335mm)
- ▶ 535mm (may be cut back to 435mm)
- ▶ 635mm (may be cut back to 535mm)
- ▶ 735mm (may be cut back to 635mm)
- ▶ 820mm (may be cut back to 735mm)
- ▶ 920mm (may be cut back to 820mm)
- ▶ 1070mm (may be cut back to 920mm)
- ▶ 1220mm (may be cut back to 1070mm)
- ▶ 1400mm* (may be cut back to 1220mm)
- ▶ 1600mm* (may be cut back to 1400mm)

*Non-standard sizes do not hold test evidence for the approval for use. Speak to our Technical Team for advice.

Finishes

- ▶ Silver anodised aluminium, grey push-fit end caps & grey silicone rubber gasket.