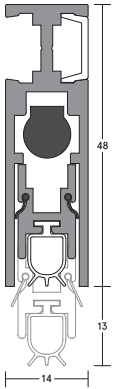


LAS8003 SI DROP SEAL FITTING GUIDE



LENGTH _____

CONTENTS

- LAS8003 si drop seal
- Flexible cover strip
- 2 x end caps
- Fixing screws
- 1 x striker button

TOOLS REQUIRED

- Tape measure
- Pencil or marker
- Saw, power or hand
- Screw driver
- Drill, power or hand
- 2.5mm drill bit
- Router + cutting router bit
- Scissors, knife or snips

FACE-FIXED

STEP 1

Remove the seal from the packaging and check maximum cut back sizes.

STEP 2

Measure the distance between the door stops. At the opposite end to the actuator button, pull back the gasket and using a power/hack saw, cut the aluminium section to the measured length, less 8mm for end caps and clearance. Remove cutting swarf/debris. Push gasket back into position and cut to length with a sharp knife.

STEP 3

Fit the end cap to the actuator button end and position the seal at the bottom face of the door on the stop side of the door, button end tight up to the door stop and allowing a maximum 13mm gap (minimum 3mm) between the door bottom and the sill. Ensure the actuator button is on the hinge side.

STEP 4

Screw fix using screws and ferrules provided. Fit other end cap.

FOR TIMBER FRAMES

Position the striker button on the stop where the actuator button meets the door frame.

STEP 5

Open and close the door observing the operation of the seal. Adjust accordingly by pulling out the actuator button clear of the housing. Firmly holding the threaded rod, turn the actuator button clockwise to reduce movement and anti-clockwise to increase the seal movement.

NOTE

For optimum results the seal should be adjusted so that the silicone gasket touches the sill in the final closing moment of the door.

SEMI-MORTISED

STEP 1

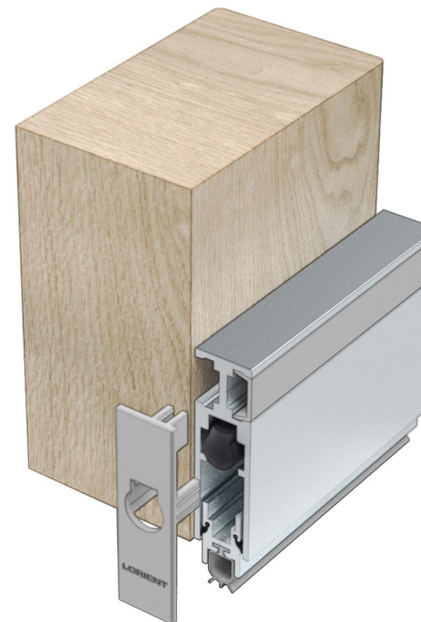
Remove the door from its hinges and cut a 35mm deep x 14mm wide rebate into the bottom of the door (on the side of the door the seal is to be positioned) and re hang the door.

STEP 2

Measure the door width. Cut the seal to the door width, using the same principles as per the facefixed installation details.

NOTE

Ensure that the installation of this product does not impede the opening or closing of the door. It is recommended to check the adjustment of the door seal periodically to ensure the door assembly to which it is fitted, closes and latches properly.



CUT BACK SIZES

Do not cut the seal shorter than the lengths indicated below or this will affect the normal operation of the internal mechanism.

820mm cuts back to 720mm
920mm cuts back to 820mm
1070mm cuts back to 920mm
1220mm cuts back to 1070mm

NOTE

We recommend LAS8003 si drop seals be used together with a Lorient perimeter seal and, if required, a threshold plate.

Recommendations as to methods, use of materials and construction details are based on the experience and knowledge of Lorient and are given in good faith as a general guide and service to designers, contractors and manufacturers.

V2

ASSA ABLOY AUSTRALIA PTY LIMITED
235 Huntingdale Road
Oakleigh
Victoria 3166
Australia

+61 (0) 3 8574 3888
customerservice.au@assaabloy.com

ASSA ABLOY

Part of ASSA ABLOY

All rights reserved. No part of this fitting guide may be reproduced, stored in a retrieval system, or transmitted in any means, electronic, mechanical, photocopying, recording or otherwise without the written permission of © Lorient Polyproducts Ltd 2021