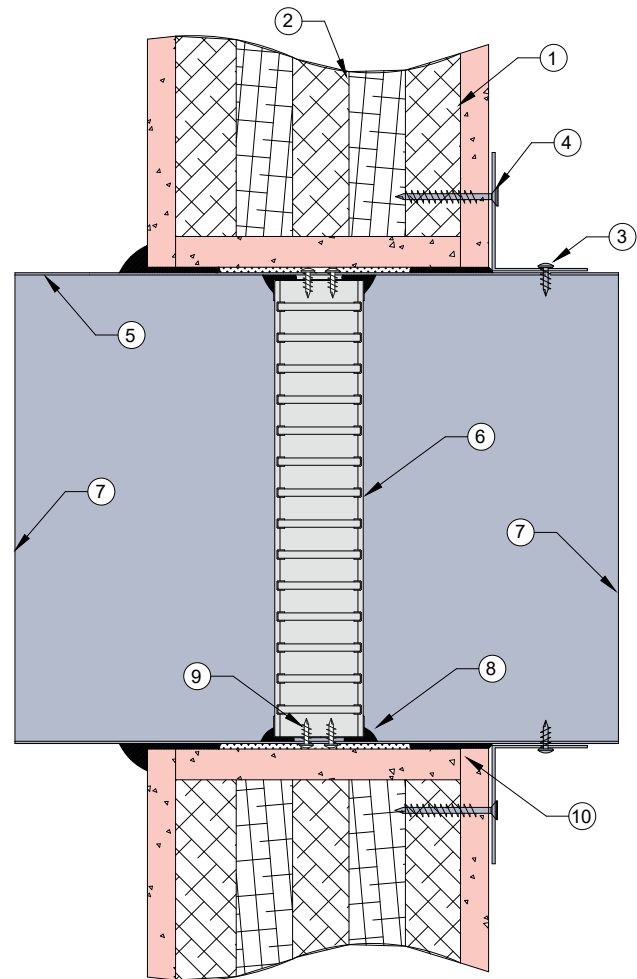


# SYSTEM XLAM 2

## CROSS LAMINATED TIMBER WALL

### DESCRIPTION

- 1 Plasterboard fixed to wall and aperture:  
1 layer of 16mm or 2 layers of 13mm fire rated plasterboard (FRL 90 minutes)  
OR  
2 layers of 16mm fire rated plasterboard (FRL 120 minutes)
- 2 XLam CLT panel. Thickness: 85mm to 315mm.
- 3 Angles fixed to damper casing with steel fasteners at 150mm centres or at least 2 per side.
- 4 0.6mm (min) Z275 galvanised steel angles to all four sides. Angles shall be continuous and at least 2 x the dimension of the gap between the damper casing and the wall. Angles fixed to wall with 50mm long coarse thread screws at 150mm centres or at least 2 per side.
- 5 Z275 galvanised steel casing min thickness 0.6mm.
- 6 Lorient LVH44 intumescent fire damper.
- 7 Casing terminates with breakaway joints as per AS1682.2.
- 8 Fire damper perimeter sealed with Lorient intumescent sealant.
- 9 Fire damper fixed to casing with 2 x steel screws.
- 10 Gap between damper and aperture filled with Lorient Intumescent sealant.



### LVH44 in steel casing penetrating a fire rated XLam CLT Wall

### FRL Up to -/120/60

#### Fire Resistance in accordance with

AS1530.4 2014

#### Approval Ref

CSIRO FCO 3300

#### Maximum size

Area not to exceed 0.2m<sup>2</sup>

### INSTALLATION INSTRUCTIONS

- ▶ Prepare the wall opening to accept the fire damper as per point 1.
  - ▶ Mechanically fix angle brackets to one side of damper casing with steel screws as per point 3.
  - ▶ Install casing in aperture and firestop the gap between the casing and wall as per point 10.
  - ▶ Fix angles to wall steel screws as per point 4.
  - ▶ Ensure product identification labels are conspicuously positioned for easy identification.
  - ▶ Ensure convenient access is provided to allow for AS1851 inspection and maintenance routines.
- ▶ **Note: Angles and fixings supplied by others.**