

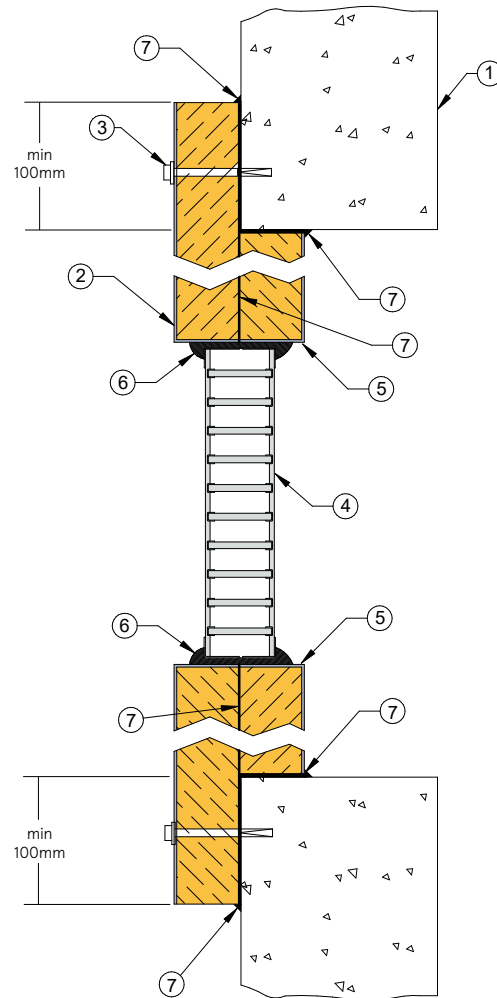
INTUBATT 2

FIRE RATED WALL FITTED WITH TBA FIREFLY INTUBATT SYSTEM

DESCRIPTION

- 1 100mm minimum thick Masonry, Concrete or Hebel® wall.
- 2 2 x 50mm thick TBA Firefly Intubatt one friction fit and one overlapping aperture (min. 100mm).
- 3 TBA Firefly Intubatt panel mechanically fixed to wall with 75mm masonry anchors at 300mm centres, as per test approvals.
- 4 TBA Firefly Intubatt incorporates Lorient LVH44 intumescent fire damper max. 450mm x 450mm.
- 5 TBA Firefly Intubatt aperture raw edges treated with brushable TBA Firefly intumastic sealant, as per test approvals.
- 6 Lorient LVH44 intumescent fire damper glued into TBA Firefly Intubatt with TBA Firefly intumastic sealant (full depth).
- 7 All other joints sealed with TBA Firefly intumastic sealant.

For TBA Firefly product enquiries visit:
www.tbafirefly.com.au



TBA FIREFLY INTUBATT

Masonry, concrete or Hebel® wall with TBA Firefly Intubatt containing Lorient LVH44 intumescent damper

FRL Up to -/120/-

Fire Resistance in accordance with

AS1530.4 2014

Approval Ref

EXOVA EWFA FAS190234

EXOVA EWFA FAS190235

Max size

450mm x 450mm

INSTALLATION INSTRUCTIONS

- ▶ Prepare wall opening to accept TBA Firefly Intubatt.
- ▶ Cut and friction fit Intubatt into wall aperture and fix with masonry anchors as per test approval - see points 2 & 3.
- ▶ Cut hole for LVH44 and prepare aperture in Intubatt cut edges, as per point 4.
- ▶ Fit LVH44 into prepared Intubatt aperture and adhere in place using TBA Firefly intumastic sealant. Note fill details in point 6.
- ▶ Ensure all joints are sealed, as per point 7.
- ▶ Ensure product identification labels are conspicuously positioned for easy identification.
- ▶ Ensure convenient access is provided to allow for AS1851 inspection and maintenance routines.
- ▶ **Note: TBA Intubatt and TBA intumastic sealant and metal fixings supplied by others.**