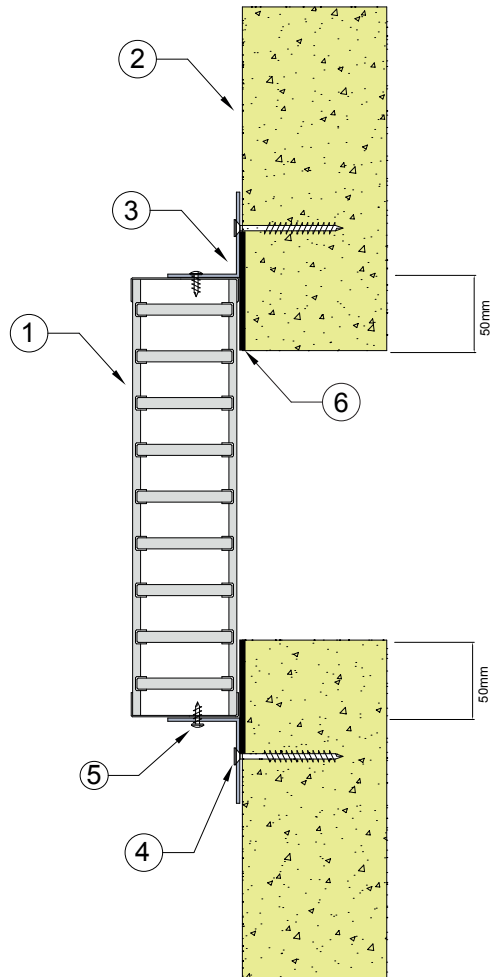


PROMAT WALL 2

FIRE RATED PROMAT BOARD SYSTEMS

DESCRIPTION

- 1 Lorient LVH44 intumescent fire damper with minimum 50mm minimum overlap around aperture.
- 2 60mm thick Promasil® 1100 board.
- 3 40mm x 40mm x 1.2mm steel angle to all four sides.
- 4 Angles fixed with steel self drilling screws at 150mm centres.
- 5 Angles fitted to board with 7 x 50mm coarse thread screws at 150mm centres.
- 6 Damper bedded in intumescent sealant.



PROMAT BOARD

LVH44 installed in Promat board

FRL Up to -/120/-

Fire Resistance in accordance with

AS1530.4 2005

Approval Ref

BRANZ FAR 3404 &
BRANZ FAR 4810

Max cell size

800mm x 800mm

INSTALLATION INSTRUCTIONS

- ▶ Prepare the opening in Promat board to accept the fire damper installation.
- ▶ Ensure minimum 50mm overlap between hole and LVH44 damper perimeter.
- ▶ Attach angles to fire damper, as per points 3 & 4.
- ▶ Liberally apply intumescent sealant around aperture.
- ▶ Bed the damper into the sealant and fix angles to the wall, as per point 5.
- ▶ Ensure product identification labels are conspicuously positioned for easy identification.
- ▶ Ensure convenient access is provided to allow for AS1851 inspection and maintenance routines.

▶ **Note: Metal angles and fixings supplied by others.**