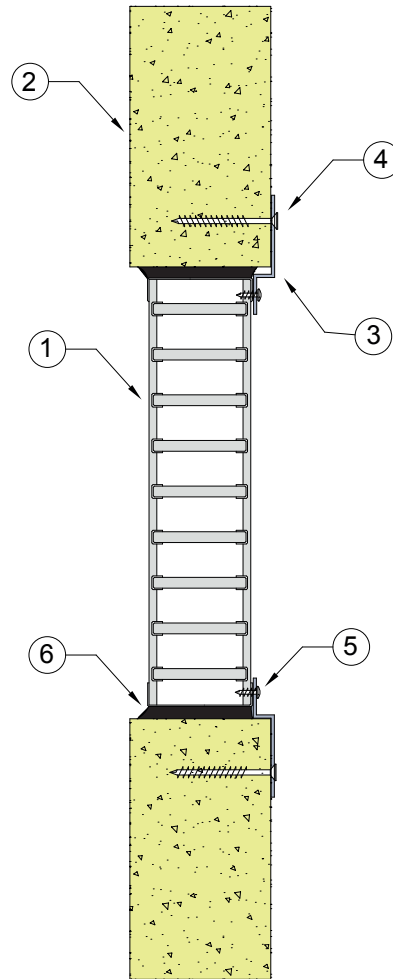


# PROMAT WALL 1

## FIRE RATED PROMAT BOARD SYSTEMS

### DESCRIPTION

- |   |  |
|---|--|
| 1 | Lorient LVH44 intumescent fire damper.                                       |
| 2 | 60mm thick Promasil® 1100 board.   |
| 3 | Steel Z fixing flange 1.2mm thick fitted to all four sides.                  |
| 4 | Z flange fixed to damper with steel self drilling screws at 150mm centres.   |
| 5 | Z angles fixed to board with 7 x 50mm coarse thread screws at 150mm centres. |
| 6 | Perimeter filled full depth with intumescent sealant.                        |



PROMAT BOARD

### LVH44 installed in Promat board

**FRL Up to -/120/-**

### Fire Resistance in accordance with

AS1530.4 2005

### Approval Ref

BRANZ FAR 3404 &  
BRANZ FAR 4810

### Max cell size

800mm x 800mm

### INSTALLATION INSTRUCTIONS

- ▶ Prepare the opening in Promat board to accept the fire damper installation.
- ▶ Attach Z angles to fire damper, as per points 3 & 4.
- ▶ Z angles are fixed to wall, as per point 5.
- ▶ Seal perimeter with intumescent sealant, as per point 6.
- ▶ Ensure product identification labels are conspicuously positioned for easy identification.
- ▶ Ensure convenient access is provided to allow for AS1851 inspection and maintenance routines.
- ▶ **Note: Metal angles and fixings supplied by others.**