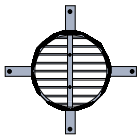
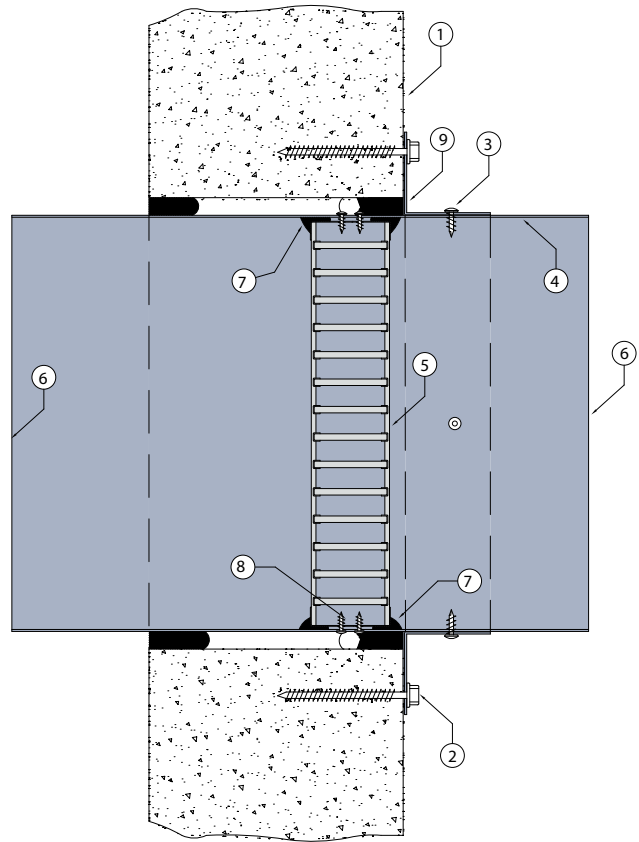


WALL 9

FIRE RATED CSR HEBEL® WALL SYSTEM

DESCRIPTION

- 1 CSR Hebel® wall with prepared aperture (minimum 75mm thick).
- 2 Angles fixed to wall with No.10-14 x 65mm Hex head Type 17 coarse thread screws at 150mm centres.
- 3 40 x 40 x 1mm Z275 galvanised steel angle brackets 3 off brackets for up to 300mm diameter and 4 brackets for larger sized up to 450mm diameter. Each angle fixed to damper casing with steel fasteners.
- 4 Z275 galvanised steel casing minimum thickness 0.6mm.
- 5 Lorient LVH44C intumescent fire damper screw fixed into casing.
- 6 Casing terminates with breakaway joints, as per AS1682.2
- 7 Fire damper perimeter sealed with Lorient intumescent sealant.
- 8 LVH44C fixed to casing with 2 x steel screws.
- 9 Gap between casing and aperture filled with Lorient intumescent sealant. Backing rod used as required to control sealant fill depth to at least 25mm. Maximum annular gap between casing and wall 25mm.



3 off fixing angles up to 250mm diameter
4 off fixing angles 300mm to 450mm diameter

LVH44C in steel casing penetrating fire rated CSR Hebel® wall

FRL Up to -/120/30

Fire Resistance in accordance with

AS1530.4 2014

Approval Ref

EXOVA EWFA 33233400

Max size

450mm diameter

Note: LVH44C up to 250mm diameter can achieve up to -/120/120 when fitted with R1.0 Polyester insulated flexible duct.

INSTALLATION INSTRUCTIONS

- ▶ Prepare the wall opening to accept the fire damper and install in wall, as shown in system detail.
- ▶ Centralise the casing and firestop the gap between the casing and wall with Lorient intumescent sealant, note fill details in point 9.
- ▶ Perimeter angles are mechanically fixed to casing with steel self drilling screws or pop rivets, as detailed in points 2 & 3.
- ▶ Ductwork shall be connected with breakaway joints, as per point 6.
- ▶ Ensure product identification labels are conspicuously positioned for easy identification.
- ▶ Ensure convenient access is provided to allow for AS1851 inspection and maintenance routines.

▶ Note: Fixings supplied by others.