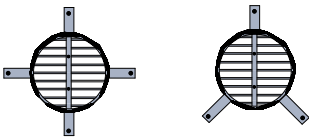


WALL 6

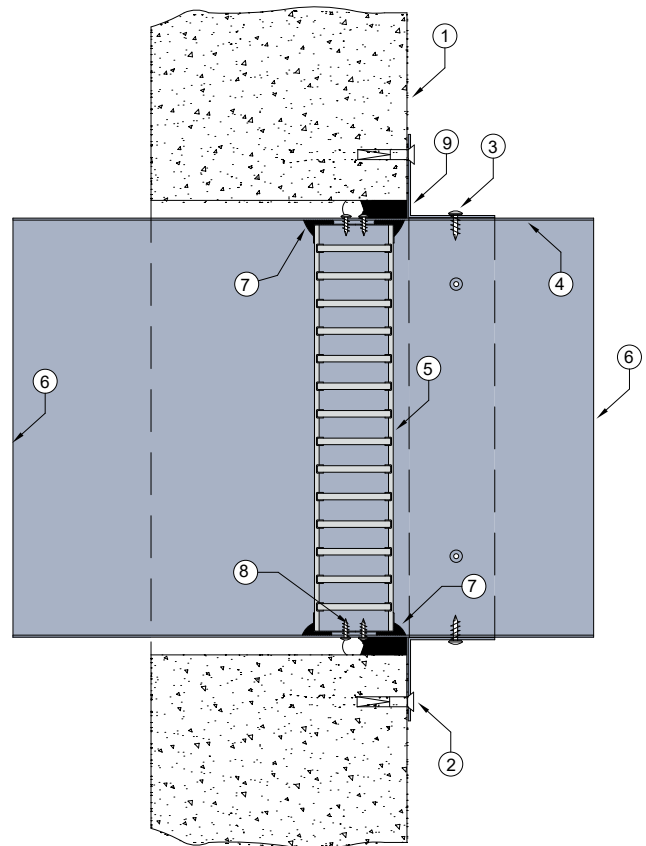
FIRE RATED MASONRY / CONCRETE WALL SYSTEM

DESCRIPTION

- | | |
|---|--|
| 1 | Masonry or concrete wall (minimum 90mm or thicker). |
| 2 | Angles brackets fixed to wall with steel masonry anchors. |
| 3 | 25mm x 40mm x 40mm x 0.6mm (min) Z275 galvanised steel angle brackets fitted to damper casing with steel screws and the gap between the damper casing and wall filled with Lorient intumescent sealant. |
| 4 | Z275 galvanised steel casing minimum thickness 0.6mm. |
| 5 | Lorient LVH44C intumescent fire damper. |
| 6 | Casing terminates with breakaway joints, as per AS1682.2. |
| 7 | Fire damper perimeter sealed with Lorient intumescent sealant. |
| 8 | LVH44C fixed to casing with 2 x steel screws. |
| 9 | Gap between casing and aperture filled with Lorient intumescent sealant. Backing rod used as required to control sealant fill depth to at least 50mm.. Maximum annular gap between casing and wall 25mm. |



3 off fixing angles up to 250mm diameter
4 off fixing angles 300mm to 450mm diameter



LVH44C in steel casing penetrating fire rated Masonry / Concrete wall FRL -/120/30

Fire Resistance in accordance with

AS1530.4 2014

Approval Ref

EXOVA EWFA 33233400

Max size

450mm diameter

Note: LVH44C up to 250mm diameter can achieve up to -/120/120 when fitted with R1.0 Polyester insulated flexible duct.

INSTALLATION INSTRUCTIONS

- ▶ Prepare the wall opening to accept the fire damper and install in wall, as shown in system detail. ▶ Note: Fixings supplied by others.
- ▶ Fix angle brackets to casing with steel self drilling screws or pop rivets, as detailed in points 2 & 3.
- ▶ Centralise in aperture and mechanically fix to wall. Firestop the gap between the casing and wall with Lorient intumescent sealant, note fill details in point 9.
- ▶ Ductwork shall be connected with breakaway joints, as per point 6.
- ▶ Ensure product identification labels are conspicuously positioned for easy identification.
- ▶ Ensure convenient access is provided to allow for AS1851 inspection and maintenance routines.