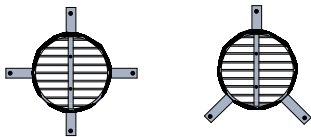
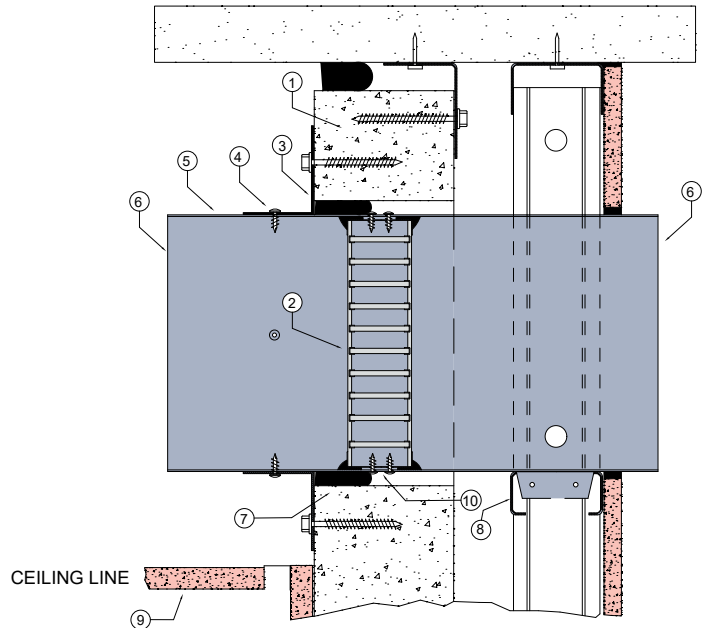


WALL 11

FIRE RATED CSR HEBEL® WALL SYSTEM

DESCRIPTION

- 1 CSR Hebel® wall installed as per manufacturers instructions (minimum 75mm thick).
- 2 Lorient LVH44C circular intumescent fire damper.
- 3 40 x 40mm x 25 x 1mm (min) Z275 galvanised steel angle fixed to wall with No.14-10 x 65mm Hex head Type 17 screw.
- 4 Angle brackets fixed to damper casing with steel fixings.
- 5 Z275 galvanised steel casing minimum thickness 0.6mm.
- 6 Casing terminates with slip joints in accordance with AS1682.1.
- 7 Gap between casing and aperture filled with Lorient intumescent sealant. Backing rod used as required to control sealant fill depth to at least 50mm. Maximum annular gap between casing and wall 25mm.
- 8 Duct supported on non-fire side with noggin between studs.
- 9 AS1851 fire damper maintenance access point required this side.
- 10 LVH44C fixed to casing with 2 x steel screws (100mm centres).



3 off fixing angles up to 250mm diameter
4 off fixing angles 300mm to 450mm diameter

LVH44C in steel casing penetrating fire rated CSR Hebel® wall

FRL -/120/30

Fire Resistance in accordance with

AS1530.4 2014

Approval Ref

EXOVA EWFA 33233400

Max single cell size

450mm diameter

Note: LVH44C up to 250mm diameter can achieve up to -/120/120 when fitted with R1.0 Polyester insulated flexible duct

Approval Ref: EXOVA EWFA 55205900

INSTALLATION INSTRUCTIONS

- ▶ Prepare the wall opening to accept the fire damper and install in wall, as shown in system detail.
- ▶ Centralise the casing and firestop the gap between the casing and wall with Lorient intumescent sealant, note fill details in point 7.
- ▶ Perimeter angles are mechanically fixed to casing with steel self drilling screws or pop rivets, as detailed in points 3 & 4.
- ▶ Ductwork shall be connected with breakaway joints, as per point 6.
- ▶ Ensure product identification labels are conspicuously positioned for easy identification.
- ▶ Ensure convenient access is provided to allow for AS1851 inspection and maintenance routines.

▶ Note: Fixings supplied by others.

