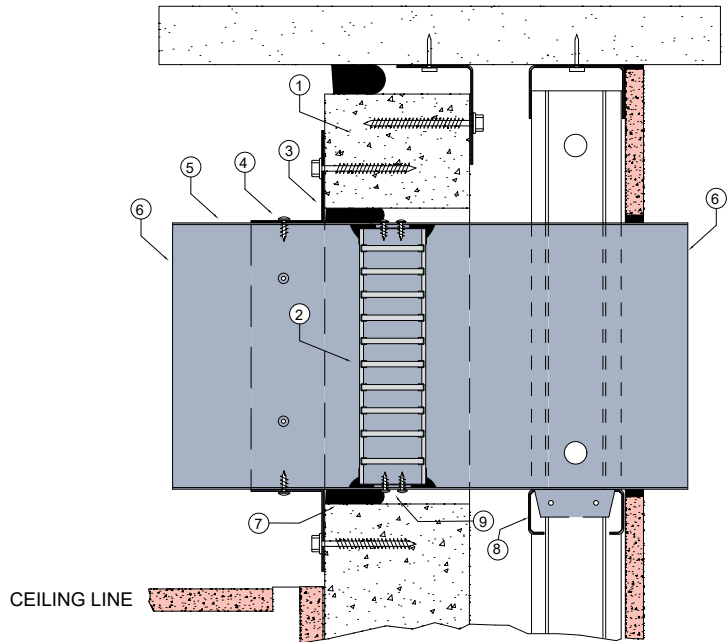


# WALL 10

## FIRE RATED CSR HEBEL® WALL SYSTEM

### DESCRIPTION

- |   |   |
|---|---|
| 1 | CSR Hebel® wall installed as per manufacturers guidelines (minimum 75mm thick).   |
| 2 | Lorient LVH44 intumescent fire damper.  |
| 3 | 40mm x 40mm x 0.6mm (min) Z275 galvanised steel angles to all four sides fixed to wall with No.10-14 x 65mm Hex head Type 17 screw.   |
| 4 | Angles fixed to damper casing with steel fixings.   |
| 5 | Z275 galvanised steel casing minimum thickness 0.6mm.   |
| 6 | Casing terminates with breakaway joints, as per AS1682.1.   |
| 7 | Gap between casing and aperture filled with Lorient intumescent sealant. Backing rod used as required to control sealant fill depth to at least 50mm. Maximum annular gap between casing and wall 25mm. |
| 8 | Duct supported on non-fire side with noggin between studs.  |
| 9 | LVH44 fixed to casing with 2 x steel screws (100mm centres).  |



### LVH44 in steel casing penetrating fire rated CSR Hebel® wall

### FRL -/120/30

### Fire Resistance in accordance with

AS1530.4 2014

### Approval Ref

EXOVA EWFA 33233400

### Max single cell size

600mm x 600mm

### INSTALLATION INSTRUCTIONS

- ▶ Prepare the wall opening to accept the fire damper and install in wall, as shown in system detail.
- ▶ Centralise the damper casing and firestop the gap between the casing and wall with Lorient intumescent sealant, see point 7 for fill details.
- ▶ Perimeter angles are mechanically fixed to casing with steel self drilling screws or pop rivets, as detailed in points 3 & 4.
- ▶ Ductwork shall be connected with breakaway joints, as per point 6.
- ▶ Ensure product identification labels are conspicuously positioned for easy identification.
- ▶ Ensure convenient access is provided to allow for AS1851 inspection and maintenance routines.
- ▶ **Note: Damper casings, angles and fixings supplied by others.**