

STUD WALL 9

FIRE RATED PLASTERBOARD WALL SYSTEM

DESCRIPTION

- 1A** 2 x 13mm fire rated plasterboard, or
- 1B** 2 x 16mm fire rated plasterboard

- 2** Fire rated plasterboard lining aperture (To be the exact same as selected 1A or 1B selection).

- 3** Steel stud framing out aperture.

- 4** Angles fixed to steel framing at 150mm centres or at least 2 per side.

- 5** 0.6mm (min) Z275 Gal steel angles to all four sides. Angle dimensions shall be continuous and at least 2 x the dimension of the gap between the damper casing and the penetrated element.
Each angle fixed to damper casing with steel fasteners at 150mm centres or at least 2 per side.

- 6** Steel damper casing 0.6mm (min) Z275 Gal steel.

- 7** Lorient LVH44 intumescent fire damper screw fixed into casing.

- 8** Casing terminates with breakaway joints, as per AS1682.2.

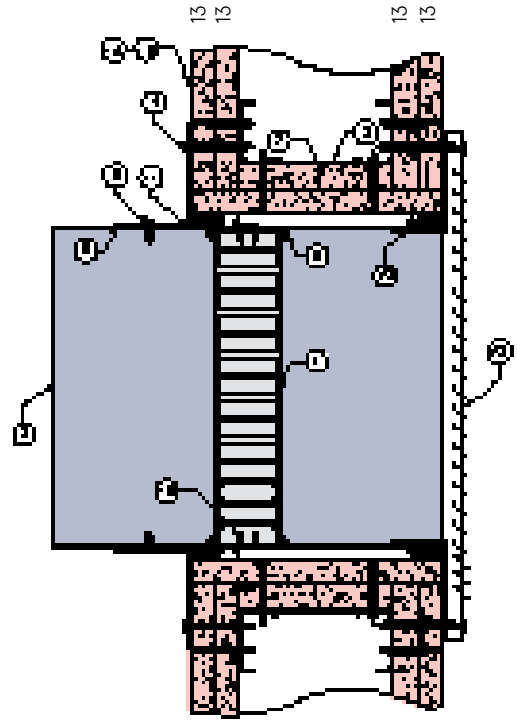
- 9** Fire damper perimeter sealed with Lorient intumescent sealant.

- 10** Fire damper fixed to casing with 2 x steel screws (100mm centres).

- 11** Gap between casing and aperture filled with Lorient intumescent sealant. Backing rod used as required to control depth to 25mm deep. Maximum annular gap between casing and wall is 25mm.

- 12** Casing either turned out or fitted out with angles to all four sides fixed in place with steel self-drilling screws.

- 13** Cover grille (by others) screw fixed in place to cover aperture.



LVH44 in steel casing penetrating fire rated Plasterboard wall

FRL Up to -/120/30

Fire Resistance in accordance with

AS1530.4 2014

Approval Ref

EXOVA EWFA 33233400

Max single cell size

600mm x 600mm

INSTALLATION INSTRUCTIONS

- ▶ Line out the wall opening to accept the fire damper, as shown in this system detail.
- ▶ Centralise the damper casing and firestop the gap between gap and casing and wall with Lorient intumescent sealant, see point 11 for fill details.
- ▶ Perimeter angles are mechanically fixed to casing with steel self-drilling screws and to wall with appropriate length needle point drywall screws, as detailed in points 4 & 5 & 12.
- ▶ Ductwork shall be connected with breakaway joints, as per point 8.
- ▶ Cover grille screw fixed with appropriate length screws, ensuring screws fixed into steel stud.
- ▶ Ensure product identifications labels are conspicuously positioned for easy identification.
- ▶ Ensure convenient access is provided to allow for AS1851 inspection and maintenance routines.
- ▶ **Note: Damper casings, angles and fixings supplied by others.**

