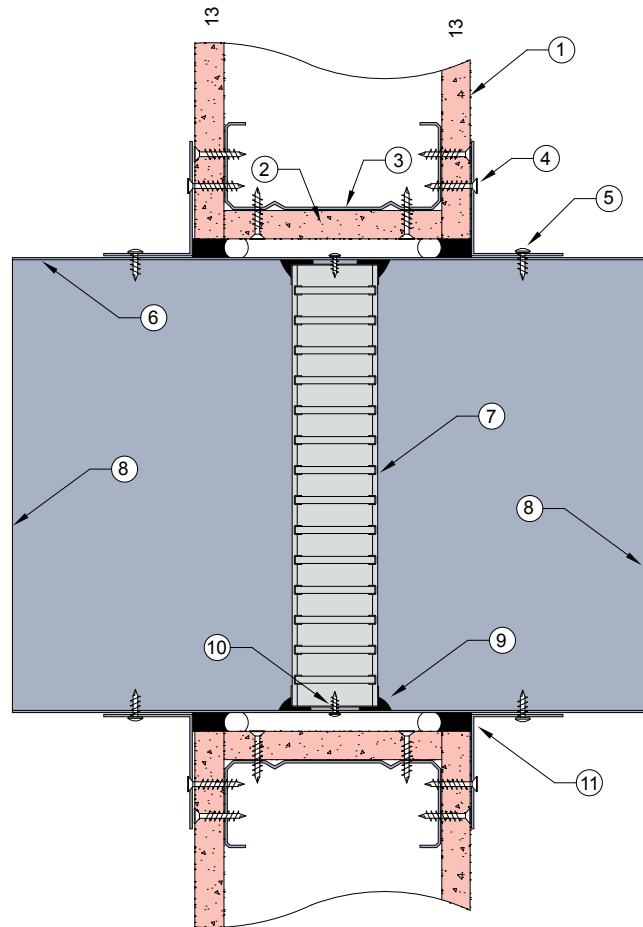


STUD WALL 8

FIRE RATED PLASTERBOARD WALL SYSTEM

DESCRIPTION

- | | |
|----|---|
| 1 | 13mm fire rated plasterboard. |
| 2 | 13mm fire rated plasterboard lining aperture. |
| 3 | Steel stud framing out aperture. |
| 4 | Angles fixed to steel framing at 150mm centres or at least 2 per side. |
| 5 | 0.6mm (min) Z275 galvanised steel angles to all four sides. Angle dimensions shall be continuous and at least 2 x the dimension of the gap between the damper casing and the penetrated element.
Each angle fixed to damper casing with steel fasteners at 150mm centres or at least 2 per side. |
| 6 | Z275 galvanised steel casing minimum thickness 0.6mm. |
| 7 | Lorient LVH44 intumescent fire damper screw fixed into casing. |
| 8 | Casing terminates with breakaway joints, as per AS1682.2. |
| 9 | Fire damper perimeter sealed with Lorient intumescent sealant. |
| 10 | Fire damper fixed to casing with steel screws. |
| 11 | Gap between casing and aperture filled with Lorient intumescent sealant. Backing rod used as required to control sealant fill depth. Maximum annular gap between casing and wall 25mm. |



LVH44 in steel casing penetrating fire rated Plasterboard wall

FRL -/60/-

Fire Resistance in accordance with

AS1530.4 2014

Approval Ref

CSIRO FCO 3149

Max single cell size

600mm x 600mm

INSTALLATION INSTRUCTIONS

- ▶ Line out the wall opening to accept the fire damper, as shown in this system detail.
- ▶ Centralise the damper casing and firestop the gap between the casing and wall with Lorient intumescent sealant, see point 11 for fill details.
- ▶ Perimeter angles are mechanically fixed to casing with steel self drilling screws and to wall with appropriate length needle point drywall screws, as detailed in points 4 & 5.
- ▶ Ductwork shall be connected with breakaway joints, as per point 8.
- ▶ Ensure product identification labels are conspicuously positioned for easy identification.
- ▶ Ensure convenient access is provided to allow for AS1851 inspection and maintenance routines.
- ▶ **Note: Damper casings, angles and fixings supplied by others.**