

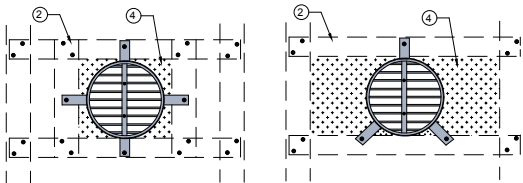
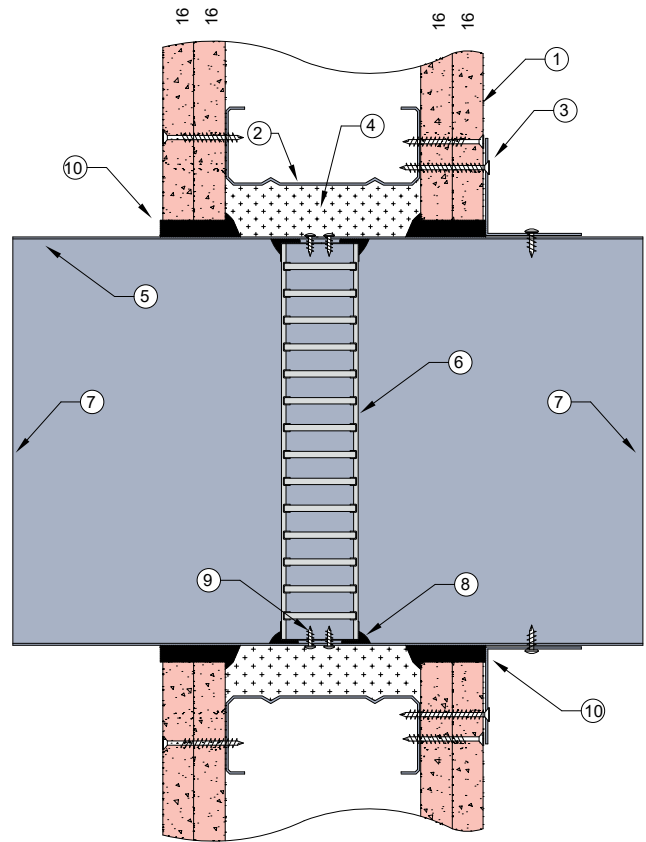
STUD WALL 7

FIRE RATED PLASTERBOARD WALL SYSTEM

FIRE RATED PLASTERBOARD WALLS

DESCRIPTION

- 1 2 x 16mm fire rated plasterboard wall.
- 2 Steel channel lining out aperture to all four sides.
- 3 25mm x 40mm x 40mm x 1mm steel angle brackets fixed to steel framing and damper casing with steel fixings.
- 4 Cavity around penetration filled with rockwool.
- 5 Z275 galvanised steel casing minimum thickness 0.6mm.
- 6 Lorient LVH44C circular intumescent fire damper screw fixed into casing.
- 7 Casing terminates with breakaway joints, as per AS1682.2.
- 8 Fire damper perimeter sealed with Lorient intumescent sealant.
- 9 Fire damper fixed to casing with 2 x steel screws.
- 10 Gap between casing and aperture filled full depth with Lorient intumescent sealant. Maximum annular gap between casing and wall 25mm.



Circular LVH44 tied back to studs with steel track to ensure damper is fully supported within the framing structure of the wall.
Internal cavity around LVH44C packed out with rockwool to retain wall insulation.

LVH44C in steel casing penetrating fire rated Plasterboard wall

FRL -/120/30

Fire Resistance in accordance with

AS1530.4 2014

Approval Ref

EXOVA EWFA 33233400

Max cell size

450mm diameter

Note: LVH44C can achieve -/120/120 when fitted with R1.0 Polyester insulated flexible duct.

INSTALLATION INSTRUCTIONS

- ▶ Prepare the wall opening to accept the fire damper and install in wall as shown in this system detail.
- ▶ Fill cavity around penetration with rockwool, as per point 4.
- ▶ Fix angle brackets to casing with steel self drilling screws or pop rivets, as detailed in points 3.
- ▶ Centralise in aperture and mechanically fix to wall. Firestop the gap between the casing and wall with Lorient intumescent sealant, note fill details in point 10.
- ▶ Ductwork shall be connected with breakaway joints, as per point 7.
- ▶ Ensure product identification labels are conspicuously positioned for easy identification.
- ▶ Ensure convenient access is provided to allow for AS1851 inspection and maintenance routines.
- ▶ **Note: Fixings and rockwool supplied by others.**

