

STUD WALL 19 TIGHT TO SLAB

FIRE RATED PLASTERBOARD WALL SYSTEM



FIRE RATED PLASTERBOARD WALLS

DESCRIPTION

- 1E** 16mm fire rated plasterboard.

- 2** Lorient LVH44 intumescent fire damper.

- 3** Angles fixed to wall with steel screws at 150mm centres or at least 2 per side.

- 4** 0.6mm (min) Z275 galvanised steel angles to all three sides. Angle dimensions shall be continuous and at least 2 x the dimension of the gap between the damper casing and the penetrated element.
Each angle fixed to damper casing with steel fasteners at 150mm centres or at least 2 per side.

- 5** Z275 galvanised steel casing min thickness 0.6mm.

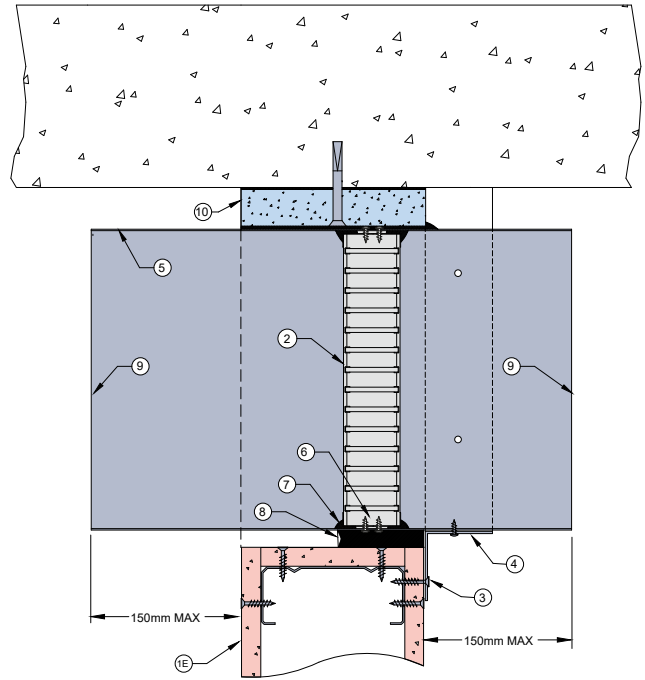
- 6** Fire damper fixed to casing with 2 x steel screws (100mm centres).

- 7** Fire damper perimeter sealed with Lorient intumescent sealant.

- 8** Gap between casing and aperture filled full depth (at least 50mm depth) with Lorient intumescent sealant. Maximum annular gap between casing and wall is 25mm.

- 9** Casing terminates with breakaway joint as per AS1682.2

- 10** 100mm wide x 50mm thick TBA Firefly Intubatt or non-combustible block running full width of aperture. Bedded in Lorient intumescent sealant and mechanically fixed to slab with steel expanding anchors.



LVH44 in steel casing penetrating fire rated Plasterboard wall – tight to slab

FRL -/90/30

Fire Resistance in accordance with

AS1530.4 2014

Approval Ref

EXOVA EWFA 33233400

Max size

600mm x 600mm

INSTALLATION INSTRUCTIONS

- ▶ Prepare the wall opening to accept the fire damper and install in wall, as shown in this system detail.
- ▶ Non-combustible TBA Intubatt block is fixed to slab, as per point 10.
- ▶ Lorient intumescent sealant liberally applied to block and duct containing damper is positioned and pushed up tight to block.
- ▶ Firestop the gap between the casing and wall with Lorient intumescent sealant, note fill details in point 8.
- ▶ 3 off perimeter angles are mechanically fixed to bottom and sides of casing with steel self drilling screws and fixed to wall with masonry anchors, as detailed in point 3.
- ▶ Ductwork shall be connected with breakaway joints, as per point 9.
- ▶ Ensure product identification labels are conspicuously positioned for easy identification.
- ▶ Ensure convenient access is provided to allow for AS1851 inspection and maintenance routines.
- ▶ **Note: Damper casing, angles and fixings supplied by others.**

