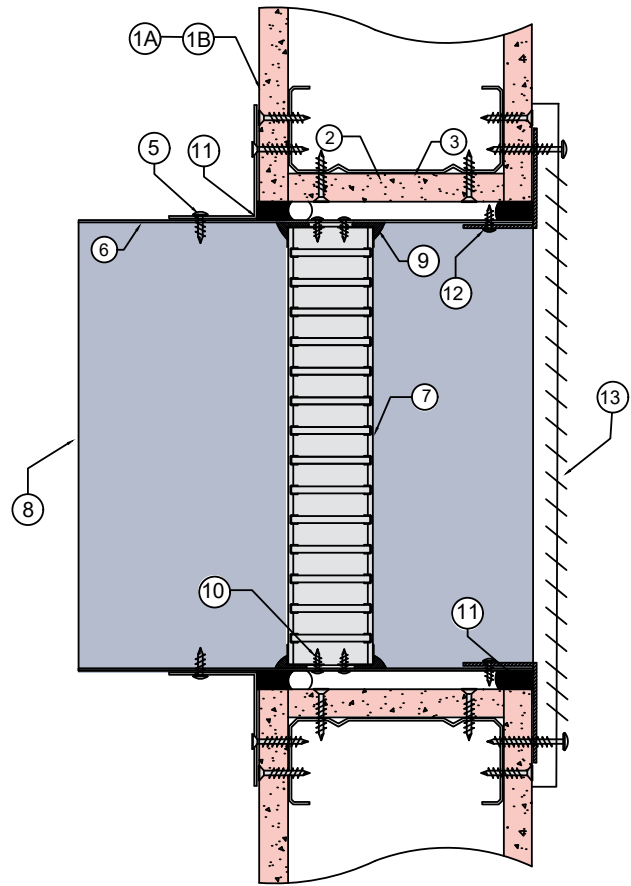


STUD WALL 12

FIRE RATED PLASTERBOARD WALL SYSTEM

DESCRIPTION

1A	16mm fire rated plasterboard
1B	13mm fire rated plasterboard *FRL will vary depending on plasterboard thickness
2	Fire rated plasterboard lining aperture.
3	Steel stud framing out aperture.
4	Angles fixed to steel framing at 150mm centres or at least 2 per side.
5	0.6mm (min) Z275 Gal steel angles to all four sides. Angle dimensions shall be continuous and at least 2 x the dimension of the gap between the damper casing and the penetrated element. Each angle fixed to damper casing with steel fasteners at 150mm centres or at least 2 per side.
6	Steel damper casing 0.6mm (min) Z275 Gal steel.
7	Lorient LVH44 Intumescent fire damper screw fixed into casing.
8	Casing terminates with breakaway joints as per AS1682.2.
9	Fire damper perimeter sealed with Lorient intumescent sealant
10	Fire damper fixed to casing with 2 x steel screws (100mm centres).
11	Gap between casing and aperture filled with Lorient intumescent sealant. Backing rod used as required to control depth to 25mm deep. Maximum annular gap between casing and wall is 25mm.
12	Casing either turned out or fitted out with angles to all four sides fixed in place with steel self-drilling screws.
13	Cover grille (by others) screw fixed in place to cover aperture.



LVH44 in steel casing penetrating fire rated Plasterboard wall

FRL Up to -/90/30
(with 16mm FR plasterboard)

Up to -/60/30
(with 13mm FR plasterboard)

Fire Resistance in accordance with

AS1530.4 2014

Approval Ref

EXOVA EWFA 33233400

Max single cell size

600mm x 600mm

INSTALLATION INSTRUCTIONS

- ▶ Line out the wall opening to accept the fire damper, as shown in this system detail.
- ▶ Centralise the damper casing and firestop the gap between gap and casing and wall with Lorient intumescent sealant, see point 11 for fill details.
- ▶ Perimeter angles are mechanically fixed to casing with steel self-drilling screws and to wall with appropriate length needle point drywall screws, as detailed in points 4 & 5 & 12.
- ▶ Ductwork shall be connected with breakaway joints, as per point 8.
- ▶ Cover grille screw fixed with appropriate length screws, ensuring screws fixed into steel stud.
- ▶ Ensure product identifications labels are conspicuously positioned for easy identification.
- ▶ Ensure convenient access is provided to allow for AS1851 inspection and maintenance routines.
- ▶ **Note: Damper casings, angles and fixings supplied by others.**