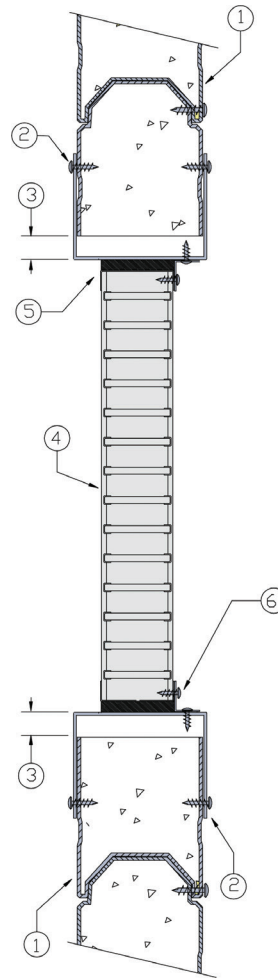


# NON-INSULATING WALL 6

SPEEDPANEL®

## DESCRIPTION

- 1 51mm, 64mm or 78mm Speedpanel® wall system.
- 2 Aperture lined out with box track section screw fixed to wall with 10G self drill steel screws at 400mm centres (or min 2 per side).
- 3 Gap between box channel and aperture varies - max 20mm.
- 4 Lorient LVH44 intumescent fire damper.
- 5 Gap between damper and aperture filled with Lorient Intumescent sealant mm centres.
- 6 Angles fixed to damper with steel fasteners at 150mm centres.



## LVH44 Air Transfer Grille

FRL Up to -/120/-

Fire Resistance in accordance with

AS1530.4 2014

Approval Ref

EXOVA EWFA 55205900

Max size

1200mm x 2400mm

## INSTALLATION INSTRUCTIONS

- ▶ Prepare the wall opening to accept the fire damper, as per point 1.
  - ▶ Mechanically fix angle brackets to aperture with steel anchors, as per point 2.
  - ▶ Install LVH44 in aperture, and fix to angle brackets with steel self drilling screws as per point 3.
  - ▶ Firestop the gap between the perimeter and wall with Lorient intumescent sealant, note fill details in point 4.
  - ▶ Ensure product identification labels are conspicuously positioned for easy identification.
  - ▶ Ensure convenient access is provided to allow for AS1851 inspection and maintenance routines.
- ▶ Note: Angles and fixings supplied by others.