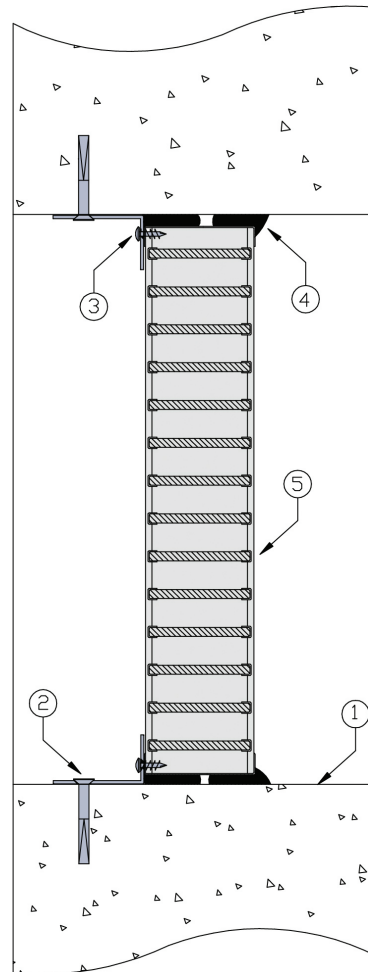


# NON-INSULATING WALL 5

## CSR HEBEL® WALL

### DESCRIPTION

- 1 CSR Hebel® wall with prepared aperture.
- 2 40mm x 40mm x 25mm x 1mm Z275 galvanized steel angle brackets to all four sides fixed to wall with steel anchors at 200mm centres.
- 3 Angles fixed to damper with steel fasteners at 150mm centres.
- 4 Gap between damper and aperture filled with Lorient Intumescent sealant.
- 5 Lorient LVH44 intumescent fire damper.



### LVH44 Air Transfer Grille

### FRL Up to -/120/-

#### Fire Resistance in accordance with

AS1530.4 2014

#### Approval Ref

EXOVA EWFA 55205900

#### Max size

1200mm x 2400mm

### INSTALLATION INSTRUCTIONS

- ▶ Prepare the wall opening to accept the fire damper, as per point 1.
  - ▶ Mechanically fix angle brackets to aperture with steel anchors, as per point 2.
  - ▶ Install LVH44 in aperture, and fix to angle brackets with steel self drilling screws as per point 3.
  - ▶ Firestop the gap between the perimeter and wall with Lorient intumescent sealant, note fill details in point 4.
  - ▶ Ensure product identification labels are conspicuously positioned for easy identification.
  - ▶ Ensure convenient access is provided to allow for AS1851 inspection and maintenance routines.
- ▶ **Note: Angles and fixings supplied by others.**