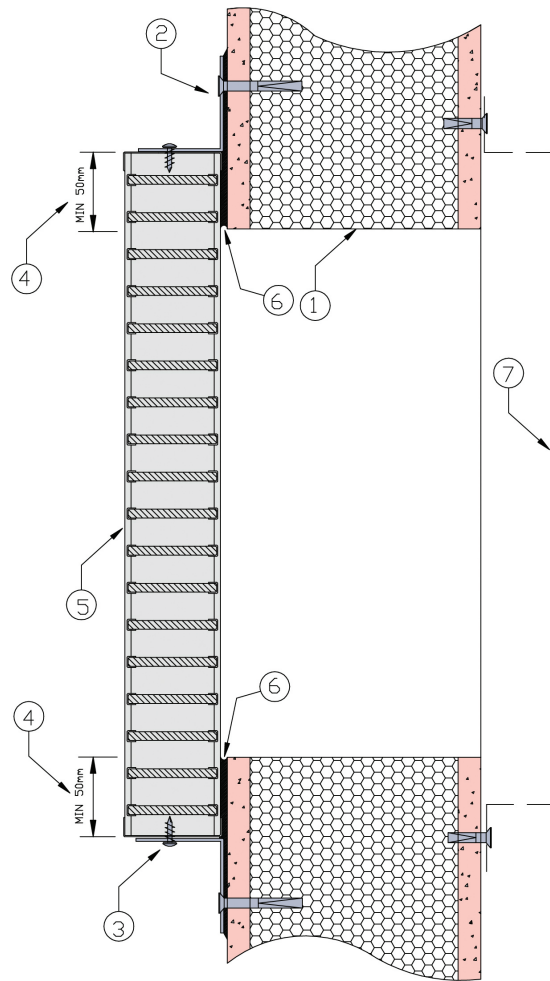


INSULATING OVER APERTURE WALL 10

PRONTO PANEL™

DESCRIPTION

- 1 Pronto Panel™ wall.
- 2 Full length 40mm x 40mm x 1mm angles fixed to wall with steel anchors.
- 3 Angles fixed to damper perimeter with steel self-drilling screw at 150mm centres.
- 4 Damper to overlap aperture by 50mm (minimum).
- 5 Damper bedded in Lorient intumescent sealant.
- 6 12mm x 24mm wire mesh with 75mm projection and 40mm aperture overlap fixed to wall with steel anchors and penny washers.
- 7 12mm x 12mm steel mesh with 40mm (nominal) projection and 70mm aperture overlap fixed in place with steel anchors and penny washers.



LVH44 Air Transfer Grille

FRL Up to -/120/120*

Fire Resistance in accordance with

AS1530.4 2014

Approval Ref

EXOVA EWFA 55205900

Max wall aperture size

1000mm x 500mm

* One direction only (i.e. LVH44 positioned in fire compartment)

INSTALLATION INSTRUCTIONS

- ▶ Fit 40mm x 40mm x 1mm angles to damper as per point 3.
- ▶ Position damper over aperture ensuring minimum distance of 50mm as per point 4. Mark and drill fixing holes.
- ▶ Liberally apply Lorient intumescent sealant to area where damper and angles are to be fitted.
- ▶ Bed damper into intumescent sealant and fix to wall using steel anchors at min 200mm centres.
- ▶ Fix wire mesh grill to opposite side as per point 7.
- ▶ Ensure product identification labels are conspicuously positioned for easy identification.
- ▶ Ensure convenient access is provided to allow for AS1851 inspection and maintenance routines.
- ▶ **Note: Angles and fixings supplied by others.**