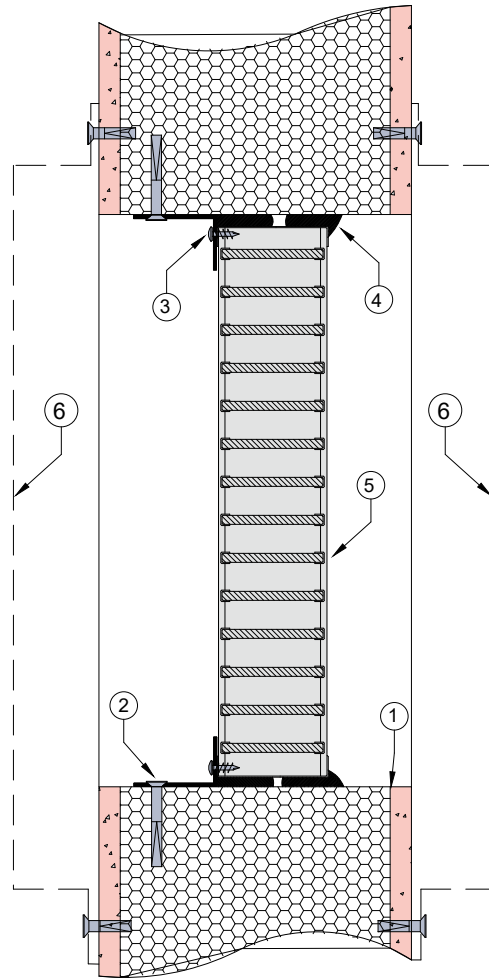


# INSULATING LVH44 WALL 3

## PRONTO PANEL™

### DESCRIPTION

- 1 Pronto Panel™ wall with prepared aperture.
- 2 40mm x 40mm x 25mm x 1mm Z275 galvanized steel angle brackets to all four sides fixed to wall with steel anchors at 200mm centres.
- 3 Angles fixed to damper with steel fasteners at 150mm centres.
- 4 Gap between damper and aperture filled with Lorient Intumescent sealant.
- 5 Lorient LVH44 intumescent fire damper.
- 6 12mm x 24mm wire mesh with 75mm projection and 40mm aperture overlap fixed to wall with steel anchors and penny washers.



### LVH44 Air Transfer Grille

### FRL Up to -/120/120

#### Fire Resistance in accordance with

AS1530.4 2014

#### Approval Ref

EXOVA EWFA 55205900

#### Max size

1200mm x 2400mm

### INSTALLATION INSTRUCTIONS

- ▶ Prepare the wall opening to accept the fire damper, as per point 1.
- ▶ Mechanically fix Angle brackets to aperture with steel anchors, as per point 2.
- ▶ Install LVH44 in aperture, and fix to angle brackets with steel self drilling screws as per point 3.
- ▶ Firestop the gap between the LVH44 perimeter and wall with Lorient intumescent sealant, note fill details in point 4.
- ▶ Ensure product identification labels are conspicuously positioned for easy identification.
- ▶ Ensure convenient access is provided to allow for AS1851 inspection and maintenance routines.

▶ **Note:** Angles and fixings supplied by others.