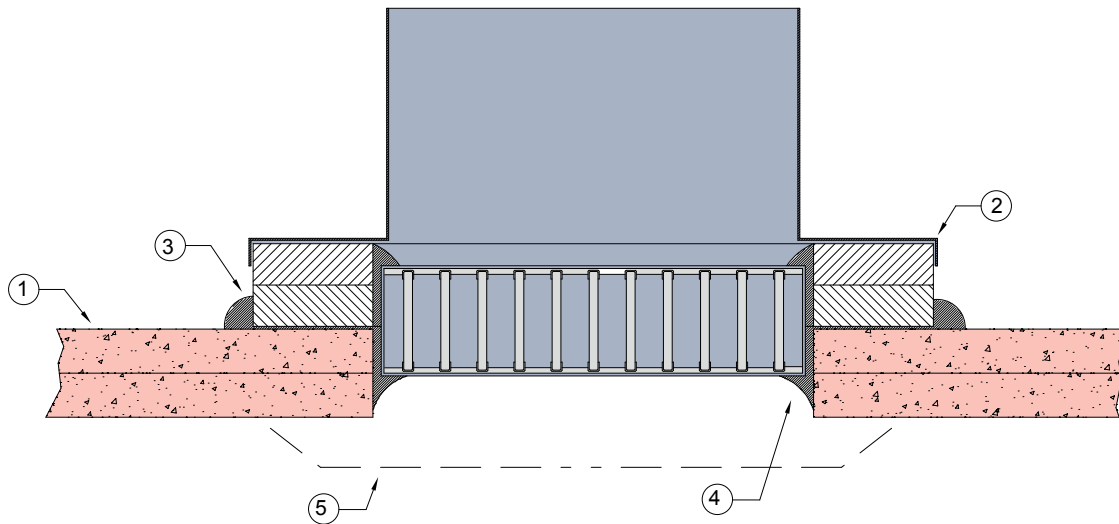


# CEILING 3

## FIRE & INCIPIENT RATED CEILINGS

### DESCRIPTION

- 1 Dual layer rated plasterboard ceiling.
- 2 Lorient fire rated inline fan connection block.
- 3 Base plate bedded in Lorient intumescent sealant.
- 4 Perimeter gap filled full depth with Lorient intumescent sealant.
- 5 Aluminium return / supply air cover grilles as required.



### LVH44C installed in ceiling FRL 60/60/60

#### Fire Resistance in accordance with

AS1530.4 2014

60 minutes resistance to the  
incipient spread of flame (RISF)

#### Approval Ref

BRANZ FP 5859

#### Max cell size

150mm diameter

### INSTALLATION INSTRUCTION

- ▶ Determine location and prepare 165mm diameter hole in ceiling.
- ▶ Liberally apply Lorient intumescent sealant to the damper baseplate and a 25mm band around the aperture.
- ▶ Fit damper centrally within the aperture and push into the intumescent sealant ensuring that is completely bedded in.
- ▶ Connect flexible ductwork to casing spigot.
- ▶ On the underside of the ceiling seal fill the gap between damper and aperture full depth with Lorient intumescent sealant.
- ▶ Fit face cover plate as required.
- ▶ **Note: Air diffuser / cover plate supplied by others.**

