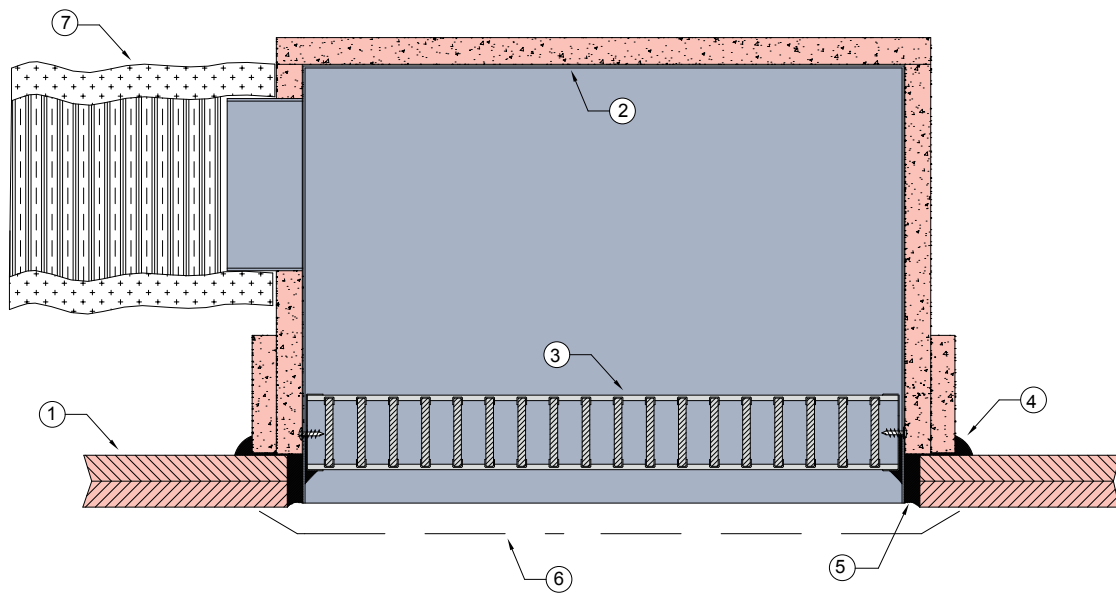


# CEILING 1

## FIRE & INCIPIENT RATED CEILINGS

### DESCRIPTION

- |   |   |   |   |
|---|---|---|---|
| 1 | Dual layer fire rated plasterboard ceiling.   | 6 | Aluminium diffuser fitted to underside as required. |
| 2 | LOR-LITE fire rated plenum box.   | 7 | Insulated flexible duct connected to box.           |
| 3 | Lorient LVH44 intumescent grille.   |   |   |
| 4 | Plenum box bedded in Lorient intumescent sealant.                                       |   |   |
| 5 | Gap between casing and plasterboard filled full depth with Lorient intumescent sealant. |   |   |



### LVH44 installed in ceiling

## FRL 60/60/60

### Fire Resistance in accordance with

AS1530.4 2014

60 minutes resistance to the incipient spread of flame (RISF)

### Approval Ref

BRANZ FAR 4581

### Max single cell size

Max area 0.25sqm

### INSTALLATION INSTRUCTIONS

- ▶ Prepare aperture in ceiling to accept installation.
- ▶ Fit supplied plenum box to aperture as detailed.
- ▶ Liberally apply Lorient intumescent sealant around aperture and bed box into sealant, as per point 4.
- ▶ Seal gap between box and aperture full depth with Lorient intumescent sealant, as per point 5.
- ▶ Ensure product identification labels are conspicuously positioned for easy identification.
- ▶ Ensure convenient access is provided to allow for AS1851 inspection and maintenance routines.
- ▶ **Note: Air diffuser supplied by others.**