

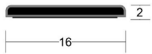
LAS1602

MEDIUM DUTY

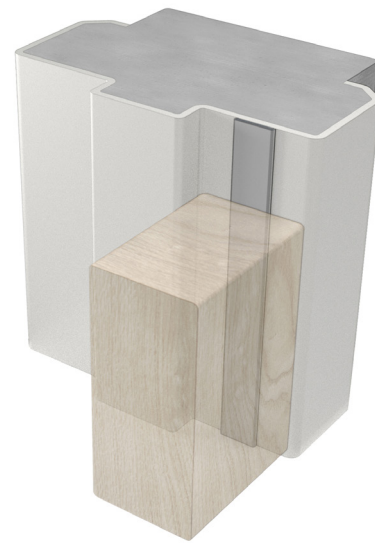
This slim flexible intumescent fire seal is fitted to door frames to enhance their fire resistance characteristics. When exposed to elevated temperatures, the intumescent core rapidly expands in volume to restrict the passage of fire, hot smoke and toxic gases.



FIRE + SMOKE SEALS



▲ LAS1602



▲ LAS1602

SYSTEM SPECIFICATIONS

Key benefits

- ▶ Ideal for use in fire engineering solutions to enhance fire performance and limit the spread of hot gases around the edges of doors.
- ▶ Easily retrofitted to existing door assemblies.
- ▶ Simple peel-and-stick installation, our aggressive self-adhesive backing is tested on many surfaces to ensure seal longevity.
- ▶ Supplied in standard length coils to minimise on-site wastage.
- ▶ Seal surface contains anti-microbial additives to restrict bacterial growth.
- ▶ Use in conjunction with a LAS1212 Batwing® seal and LAS8001 si drop seal for a complete "life safety door" sealing solution.

Approvals

- ▶ **Fire:** Tested in accordance with AS1530.4 on proprietary AS1905.1 fire door assemblies for up to 4 hour rating.
- ▶ **Bushfire:** Approved for use on proprietary fire door assemblies for Bushfire attack levels of Flame Zone (FZ) classification or less.

Gap sizes

- ▶ 2.5mm - 3mm.

Fixing method

- ▶ Aggressive film backed self-adhesive.

Standard lengths

- ▶ 75m coils.

Finishes

- ▶ Standard colour: Black.