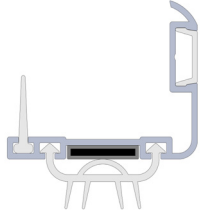


## Fitting instructions

Fire door upgrade seal

### LDBU



Length:.....

The LDBU is used for upgrading Fire doors with non compliant / excessive door bottom clearances. It is approved for use on gaps up to 22mm with proprietary fire door types. Please check with our technical department for applicable proprietary fire door types and acceptable clearance details.

### Contents include:

LDPU Seal  
Fixing screws  
Fitting instruction

### Tools required:

|                   |              |
|-------------------|--------------|
| Tape measure      | Craft knife  |
| Saw               | Screw driver |
| 2.5mm bit & drill | Pencil       |

For further information about our products please visit our website

[www.lorient.com.au](http://www.lorient.com.au)

t: +61 (02) 9905 0868  
f: +61 (02) 9905 0883  
e: [admin@lorientau.com.au](mailto:admin@lorientau.com.au)

## Instructions

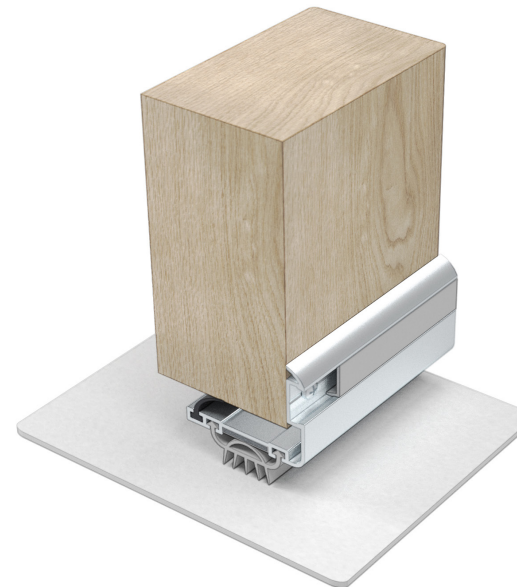
It is not necessary to remove the door from its hinges to fit this seal

1. Remove the snap fit cover strip from the aluminium carrier (do not remove the main gasket or intumescent strip).
2. Measure the door width and cut the aluminium carrier to the corresponding length.
3. If the seal is to be fitted to the stop side of the door then the visible vertical face will need to be checked out by 23mm at each end to ensure that when the seal is fitted the door can close and latch un-impeded.
4. With a knife cut the decorative cover strip to length.

**Please note:** Recommendations as to methods, use of materials and construction details are based on the experience and knowledge of Lorient and are given in good faith as a general guide and service to designers, contractors and manufacturers.

Lorient reserves the right to make alterations or delete installation detail without prior notice.

5. Offer the seal to the door bottom and using a pencil scribe the fixing hole locations (ensuring the seal lightly touches the floor surface).
6. Using a 2.5mm bit drill the pilot screw fixing holes.
7. Screw fix the seal to the bottom of the door with the screws provided.
8. Replace the snap fit cover strip.



### Important:

Ensure that the installation of this product does not impede the opening or closing of the door. It is recommended to check the adjustment of the door seal periodically to ensure the door assembly to which it is fitted, closes and latches properly.

### Other Lorient products:

Acoustic, smoke & fire seals  
Fire resistant glazing systems  
Fire resistant door hardware  
Air transfer grilles/ dampers