

## DOOR BOTTOM SEALS

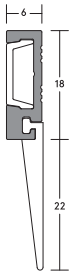
# LAS3004 si

## HEAVY DUTY

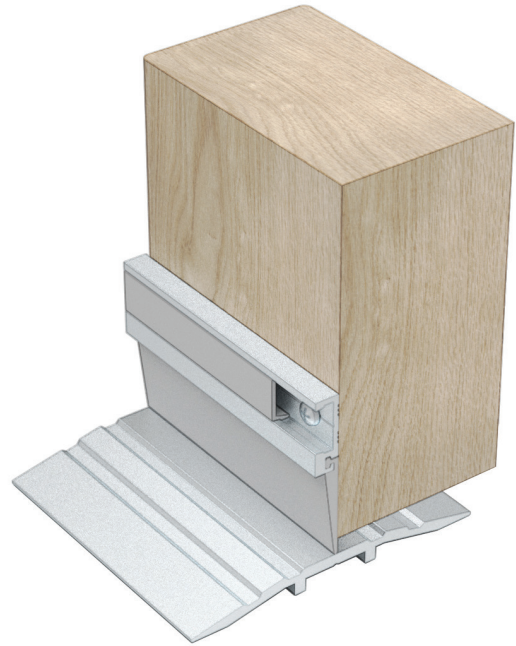
A heavy duty, sweep action door bottom seal for easy face-fixed installations. Slimline aesthetic design with flexible cover strip to conceal fixings. It can easily accommodate a range of larger threshold gap sizes.



DOOR BOTTOM SEALS



LAS3004 si



LAS3004 si  
shown with LAS4010

### SYSTEM SPECIFICATIONS

#### Key benefits

- ▶ Simple, effective sealing solution.
- ▶ Slim-line, aesthetic design.
- ▶ Easily retrofitted to existing door assemblies.
- ▶ Seal screw-fixed.

#### Gap size

- ▶ 10mm/22mm.

#### Standard lengths

- ▶ 1m, 2.1m, 2.75m and 3m.

#### Approvals

- ▶ **Fire:** Tested in accordance with AS1530.4 on proprietary AS1905.1 fire door assemblies for up to 4 hour rating.
- ▶ **Smoke:** Conforms with BCA Specification C3.4 smoke sealing requirements.
- ▶ **Bushfire:** Approved for use on proprietary fire door assemblies for Bushfire attack levels of Flame Zone (FZ) classification or less.
- ▶ **Durability:** Long term mechanical test, completing 100,000 cycles without failure.

#### Fixing method

- ▶ Fixing screws are supplied.
- ▶ Fixing holes are pre-drilled and slotted to allow the seals to be adjusted and positioned accurately.

#### Finishes

- ▶ Silver anodised aluminium with grey cover strip and grey silicone rubber blade.